

- Client Representation
- Design & Construction Management
- Superfund Sites
- Contracts
- Project Bidding
- Negotiations
- Cost and Schedule Controls
- Data & Information Management (GIS)
- Brownfields & Redevelopment
- Work Plans
- Risk Management
- Community Relations

NORTHEAST

1110 Winchester Trail
Downingtown, PA 19335
t: (610) 518-1430
f: (610) 518-5203
e: info@projectnavigator.com

GULF COAST

10497 Town & Country Way
Suite 830
Houston, Texas 77024
t: (713) 468-5004
f: (713) 468-4515
e: info@projectnavigator.com

WEST

One Pointe Drive
Suite 320
Brea, California 92821
t: (714) 388-1800
f: (714) 388-1839
e: info@projectnavigator.com

U.K. and EUROPE

Devlin House
36 St George Street
London W1S 2FW
t: +44 (0)207 380 1175
f: +44 (0)207 529 1402
e: queries@projectnavigator.co.uk

WEBSITES

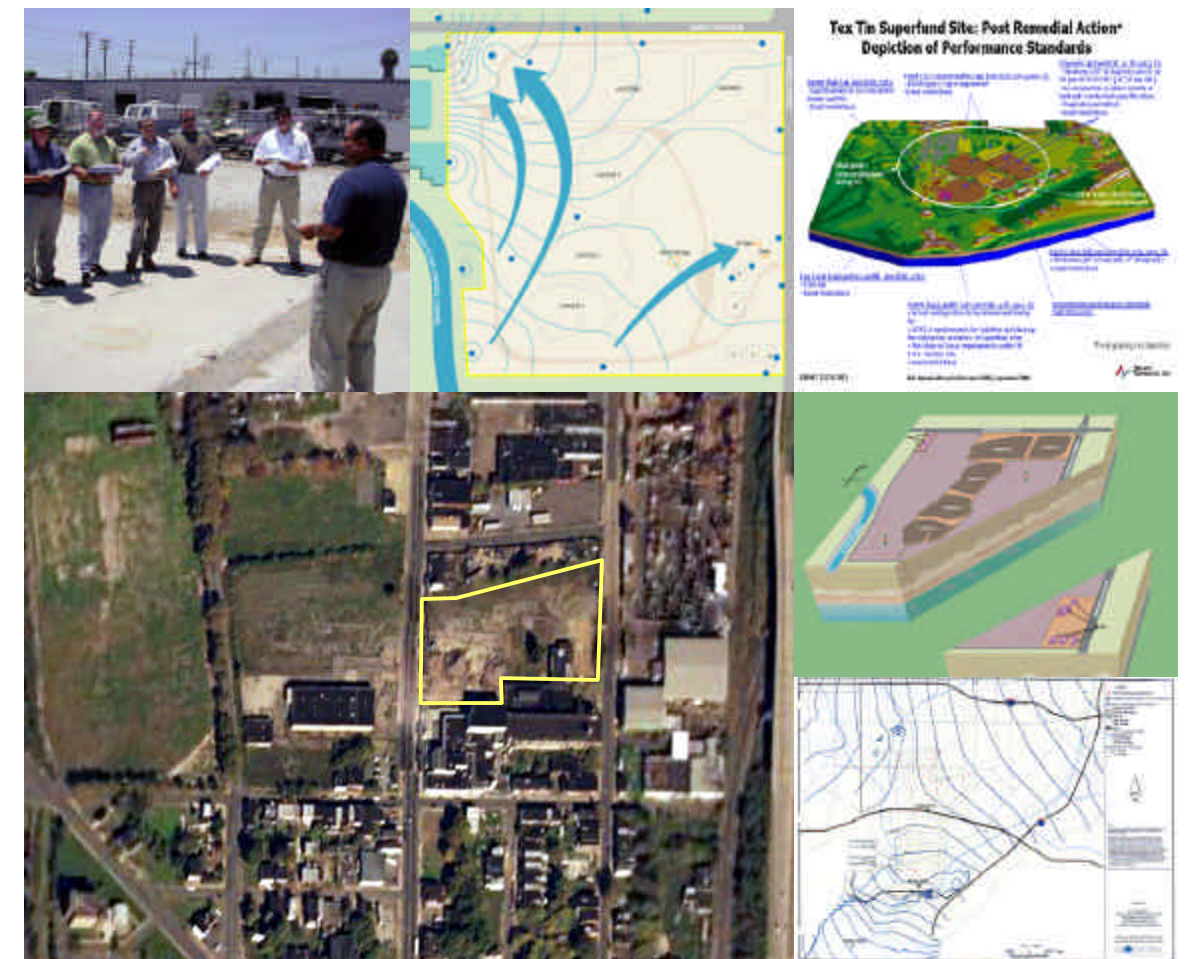
www.projectnavigator.com
www.projecttoolbox.com
www.visualizationnavigator.com

PROJECT NAVIGATOR, LTD.

Project Coordination Services

Technical, Administrative and Financial

August 2004



Project Navigator, Ltd.



Project Navigator builds models to assist with site remediation planning.

Project Navigator was formed in 1997 and is staffed by project managers, environmental engineers and geologists, who collectively have 100's of man-years of experience working on complex multiparty remediation projects. Our company helps our clients plan for projects, and assists with successful design and remediation phases. We are superb project planners and provide scoping, bidding and procurement services to insure that our client retains the appropriate project resources. We have significant multi-party project management experience and understand how to develop savings while reducing risks. We have a culture of leveraging the use of data and information and, negotiating cost effective solutions with regulatory bodies. In the field, depending on the type of contract with the selected EPC resource(s), we will provide the appropriate level of coaching to insure that the project's performance standards are met. We assess job construction quality and only accept completed work on behalf of our clients if the work has been performed according to the design.

Services

<p>Complex Site Project & Risk Management</p>	<p>Superfund Experience</p>	<p>Project Cost and Schedule Controls</p>
<p>Strategic Planning</p>	<p>Brownfields & Redevelopment</p>	<p>Regulatory Negotiations</p>
<p>Contracts (Scope definition, incentivized Vs lump sum Vs Cost plus fee Vs T&M)</p>	<p>Consultant/Contractor Oversight</p>	<p>Relationship Management</p>

Superfund and Related Project Experience

Providing solutions to Superfund site issues is a core competence of Project Navigator. We have assembled a uniquely qualified team to solve and manage major environmental projects, many of which have redevelopment opportunities. Our strengths are especially useful on complex projects, where cost effective solutions may exist within the confines of the regulatory framework, but the solution is not immediately obvious.

We serve our clients at every phase of a site's CERCLA progress from planning & assessment through design to construction. Our company has had particular success at "right-sizing" remedies while assuring their protectiveness in a cost-effective fashion.

We are trusted negotiators and managers for PRP groups, and have successfully guided ROD amendments and ESDs, saving millions of dollars.

PNL's Key Strengths

- Project Administration: Budget Control, Schedule Control, Information Management
- Superfund Initiatives
- Brownfields & Redevelopment
- Risk Assessment and Analysis
- Community Relations
- Allocation Agreement Facilitation
- Site Assessment & Development of Remedial Alternatives
- Regulatory Negotiations and Strategy
- Risk Assessment and Analysis
- Experienced in Groundwater Impacted Sites
- Project Scoping and Bidding Services, and EPC Contract Management
- Data Analysis via Geographical Information System (GIS) Techniques
- Land Valuation including Environmental Impacts
- Value Engineering
- Web Enabled Project Management (www.projecttoolbox.com)
- Construction Planning and Oversight
- Challenging Government Expenditures
- Experts in Data Assessment and Interpretation
- Design to Construction Management

Proposed Key Personnel



Steven I. Werner, Ph.D.:

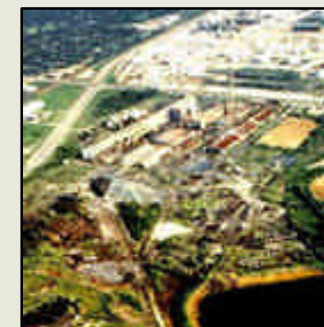
- More than twenty-five years of environmental consulting experience in private industry, insurance and consulting
- Management of more than 30 Superfund sites
- Design and implementation of worldwide environmental assessment program for a major petrochemical company
- Specializes in teaming with senior managers to develop and implement strategies that reduce environmental risk
- Developed joint ventures to pursue Brownfield opportunities
- Led team that repositioned former asphalt manufacturing facility for redevelopment into residential housing in UK
- Developed business plans for Brownfields organization
- Identified and procured capital funding for various Brownfield sites/organizations



Roberto Puga, R.G.:

- Over 15 years environmental consulting experience
- Consent Decree defined Project Coordinator on 3 Superfund Sites
- Expertise: EPA negotiations, CD/AOC/SOW compliance, PRP group management, budget and schedule control, community and stakeholder relations

Project Examples



Tex Tin Superfund Site
Project Coordinator for 200 acre tin smelter with waste ponds



Waste Disposal Inc. Site
Project Coordinator for 40 acre waste landfill site



Operating Industries Inc. (OII)
President of PRP remediation organization, Field Activities Manager



PAB Oil and Chemical Site
Project Manager / Coordinator for 20 acre oil, gas and waste pits



MAR Services Site
Project Manager for 80 acre oil waste disposal facility



ASCON Landfill Site
PRP Group Project Manager for 40 acre oil and gas waste production landfill