

Project Navigator Solutions

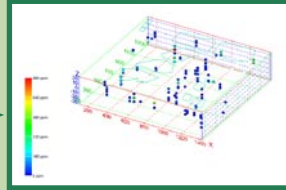
www.projectnavigator.com
www.projecttoolbox.com
www.visualizationnavigator.com
www.wemoveproperty.com

- Managing Strategies into Tactical Action
- Innovative, Environmental Remediation Project Management from Seasoned, Creative Project Teams

A Creative Solution-Driven Process



Site Aerial Analysis



GIS Data Assessment and Analysis



Storyboarding and Illustration



Scale Model Construction for Project Planning



Project Advocacy, Consulting and Engineering



Remediation Management

Examples of Project Navigator Experience and Results

Ascon Landfill State Superfund Site

Huntington Beach, California

Description: 38-Acre Oilfield Waste Landfill
Regulatory Jurisdiction: DTSC-lead
Project Cost: \$75MM - \$125MM

Problem A high profile, developable site located in a residential neighborhood. Contains ~1MM cu. yds. of oilfield wastes. Regulatory preference is for "clean closure" to maximize site reuse.

PNL Solution

- Providing for ultimate site use to drive remediation objectives
- Attempting to minimize extent of offsite removal of wastes.
- Reevaluating FS and Health Risk Assessment
- Focusing on management of waste streams, not areas
- Assisting the PRPs to identify and fill data gaps for EIR and Design
- Remedy negotiations

MAR Services Oilfield Site

Cankton, Louisiana

Description: 80-Acre Former Oilfield Waste Disposal Facility
Regulatory Jurisdiction: DNR-lead
Project Cost: \$5MM

Problem Large site with salt and Ba and As impacts. Soil volumes exceeding regulatory criteria were in excess of 250,000 cu. yds. Prohibitive remediation costs to rigorously meet criteria.

PNL Solution

- Risk-based remedy
- Worked diligently with DNR to limit remediation to 3 foot depth for salts and most metals
- \$10MM + cost savings
- Shaved 24 months from original schedule

Waste Disposal Inc. Superfund Site

Santa Fe Springs, California

Description: 40-Acre Landfill
Regulatory Jurisdiction: EPA Region 9
Project Cost: \$15MM

Problem Soil is contaminated with metals, polynuclear aromatic hydrocarbons (PAHs) and volatile organic compounds (VOCs). Most of the contamination has been detected in subsurface soils that are covered with relatively clean fill. Private school, homes and businesses are directly adjacent to the site.

PNL Solution

- Worked to eliminate excavation remedy
- Remedy is capping and bioventing
- Effective communication with all stakeholders
- Innovative graphical representation of solution to create common vision of the containment remedy
- Expedited remedy by 18 months via Design/Build process

Tex Tin Superfund Site

Texas City, Texas

Description: 140-Acre Former Tin Smelter
Regulatory Jurisdiction: EPA Region 6
Project Cost: \$24MM

Problem Historical WWII site with controversial past and high profile. Was largest tin smelter in the world during WWII. Technically complex "poster child" Superfund site (acid pools, As impacted catalysts, wastewater pools, NORM piles, dilapidated buildings).

PNL Solution

- Developed a fast-track, streamlined Design/Build approach
- Approach saved \$10MM
- Project schedule was reduced by 5 months
- Worked to build excellent relationship with City and EPA
- Tailored area by area remedy, where solution matched long-term development goals

Other Notable Project Navigator Successes

Operating Industries Inc.

Monterey Park, California

Regulatory Jurisdiction: EPA Region 9
Largest West coast CERCLA site. Project Navigator acted as the PRPs' site general manager during a \$100MM cap and gas extraction system remedy construction.

PAB Oil and Chemical

Vermilion Parish, Louisiana

Description: 18-Acre Oilfield Waste Disposal Site
Regulatory Jurisdiction: EPA Region 6
Negotiated and implemented an onsite stabilization and containment remedy rather than offsite disposal.

West Coast

One Pointe Drive, Suite 320
Brea, California 92821
Phone: 714.388.1800
Fax: 714.388.1839
Email: info@projectnavigator.com

Northeast

One Memorial Drive, 17th Floor
Cambridge, Massachusetts 02142
Phone: 617.225.0510
Fax: 617.225.0511
Email: info@projectnavigator.com

Gulf Coast

10497 Town and County Way, Suite 830
Houston, Texas 77024
Phone: 713.468.5004
Fax: 713.468.4515
Email: info@projectnavigator.com

United Kingdom

36 St. George Street
Mayfair, London W1S 2FW
Phone: +44 20 7380 1175
Fax: +44 20 7529 1402
Email: queries@projectnavigator.co.uk